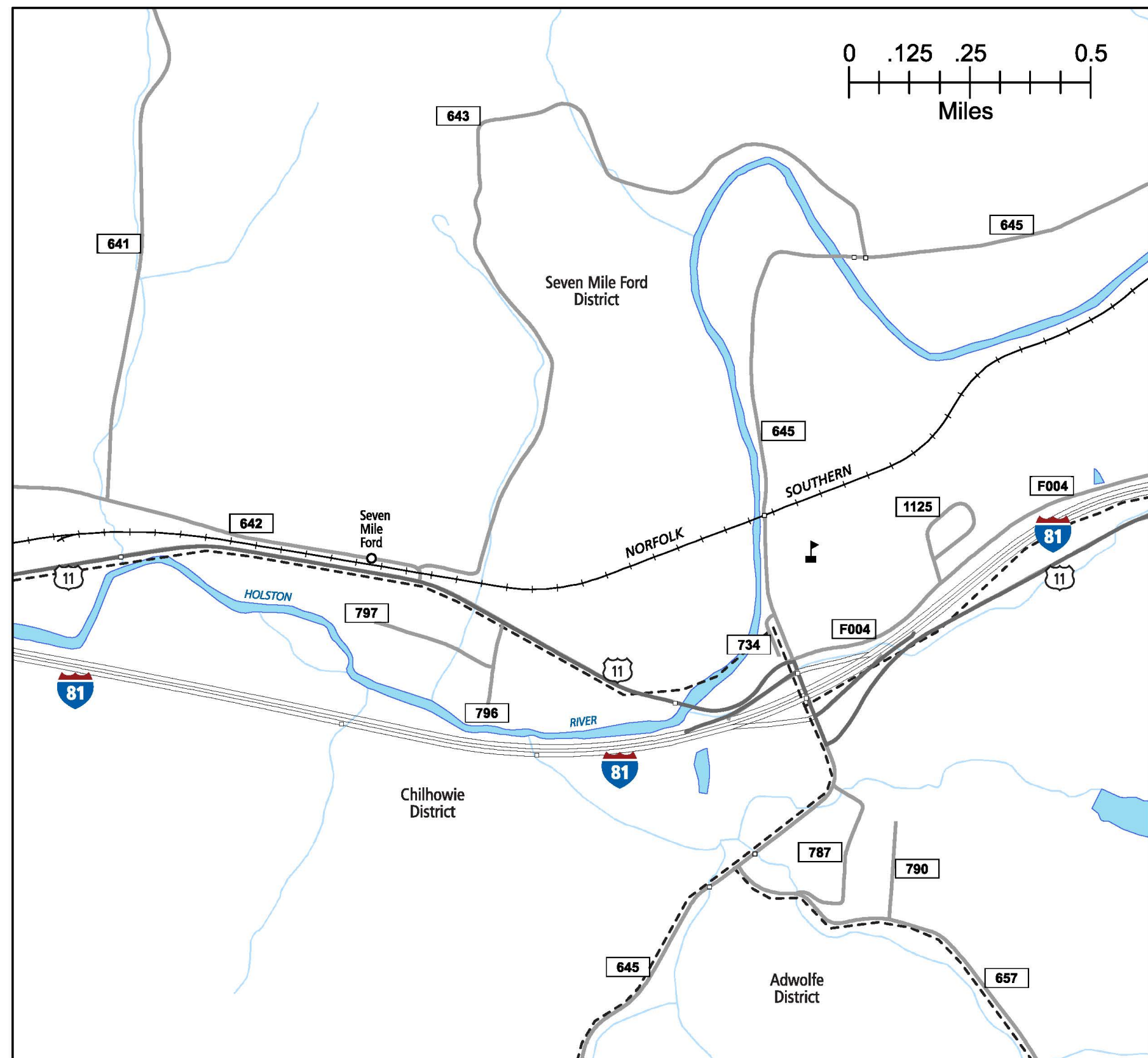
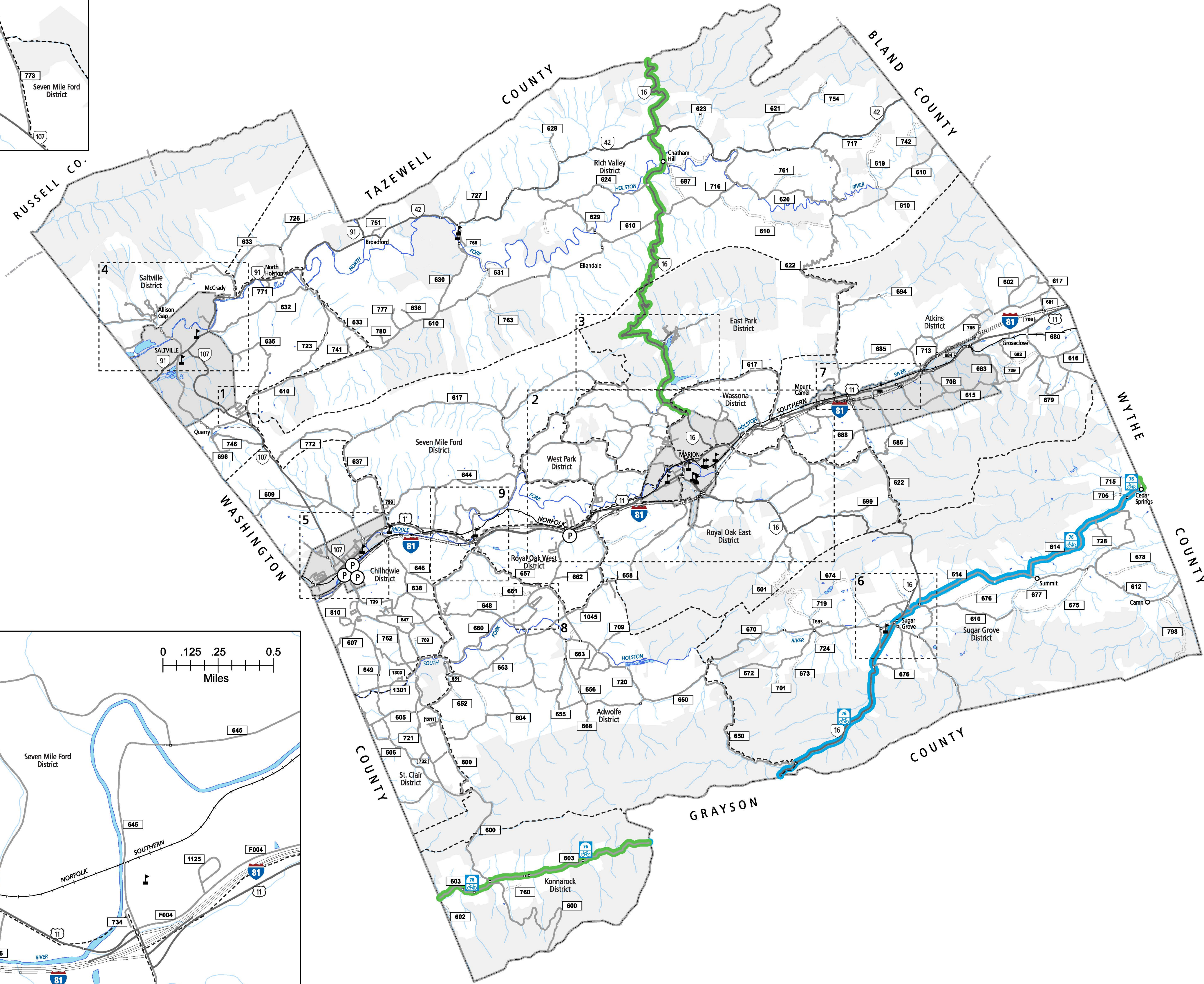


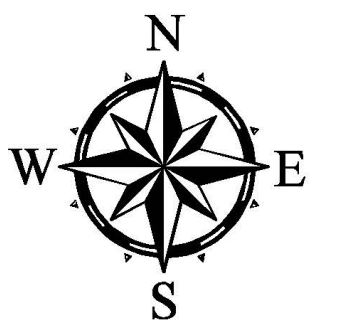
1 PLEASANT HEIGHTS AREA



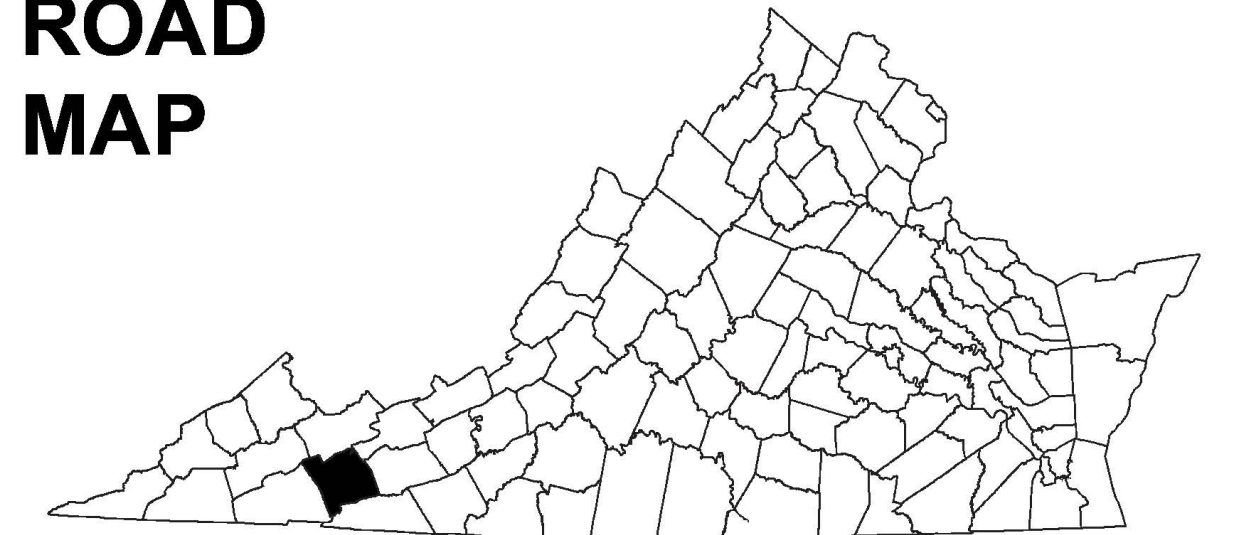
9 SEVEN MILE FORD AREA



SMYTH COUNTY, VA



COUNTY ROAD MAP



SMYTH COUNTY

ROAD CLASSIFICATIONS

- Frontage Road
- Secondary Route
- State Route
- U.S. Route
- Urban Road
- LightSurface
- DividedHwyInterstate
- AllWeatherSurface
- Unsurfaced
- otherSurface
- BikeRoutes
- AppalachianTrail
- Scenic Roads

MISCELLANEOUS

- Schools
 - Seaports
 - Park_RideLots
- AIRPORTS**
- Commercial
 - General
 - Military

RAILROADS

- Metro
- VARailroads
- Park_N_Ride

BOUNDARIES

- MilitaryAreas
- MagisterialDistricts
- Incorp_Areas
- Natural_LandCover

Additional ROAD CLASSIFICATION (Post 2019)

Hard-surface



The accuracy or completeness of this map is not guaranteed or warranted. Map depicts state-maintained highway network as of May 1, 2021. Copyright © 2021 by Commonwealth of Virginia Department of Transportation, All Rights Reserved

AN INVENTORY OF STATE MAINTAINED ROADS

TOTAL PRIMARY MILEAGE IN COUNTY 12/31/21: 88.36

SECONDARY MILEAGE TABULATION

TYPE	7/1/1932	7/1/1934	7/1/1941	TYPE	12/31/1950	12/31/1960	12/31/1970	12/31/1980	12/31/1990	12/31/2000	12/31/2016	12/31/2021
BIT_SUR_PAVED	5.00	20.45	35.88	HARD SURFACE	91.75	202.48	243.24	307.48	341.90	343.55	408.96	412.90
GRAVEL_SOIL_ETC.	167.40	192.54	254.25	ALL WEATHER SURFACE	273.69	169.32	176.64	125.15	98.49	97.69	37.92	00.00
GRADED & DRAINED	73.55	33.33	50.82	LIGHT SURFACE	37.54	48.90	9.95	4.14	4.40	4.40	3.40	00.00
UNIMPROVED	153.05	125.25	38.02	UNSURFACED	12.53	13.37	0.55	0.55	0.00	0.00	0.00	37.90
TOTAL MILEAGE	399.00	371.57	378.97	TOTAL MILEAGE	415.51	434.07	430.38	437.32	444.79	445.64	450.28	450.80