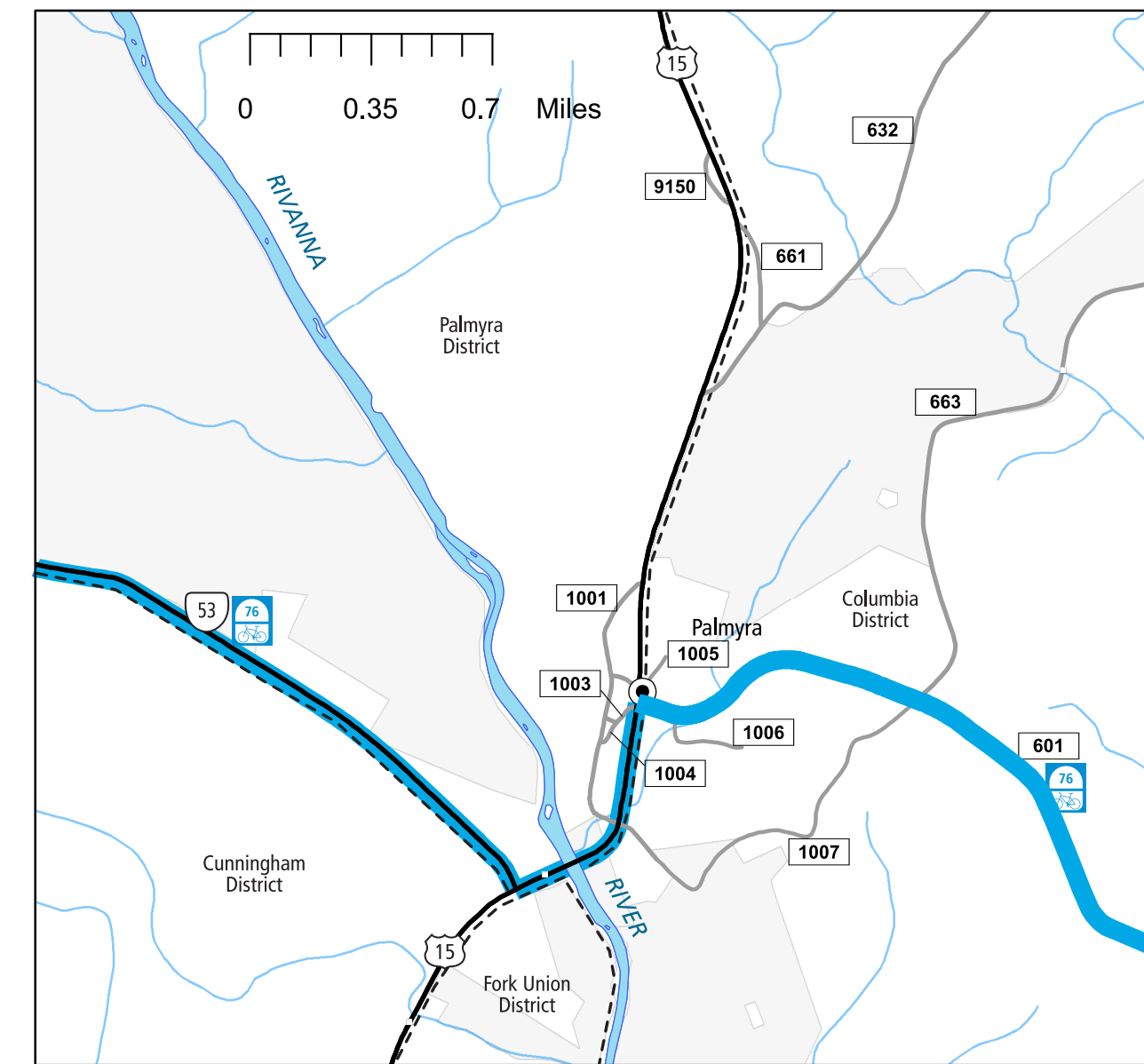
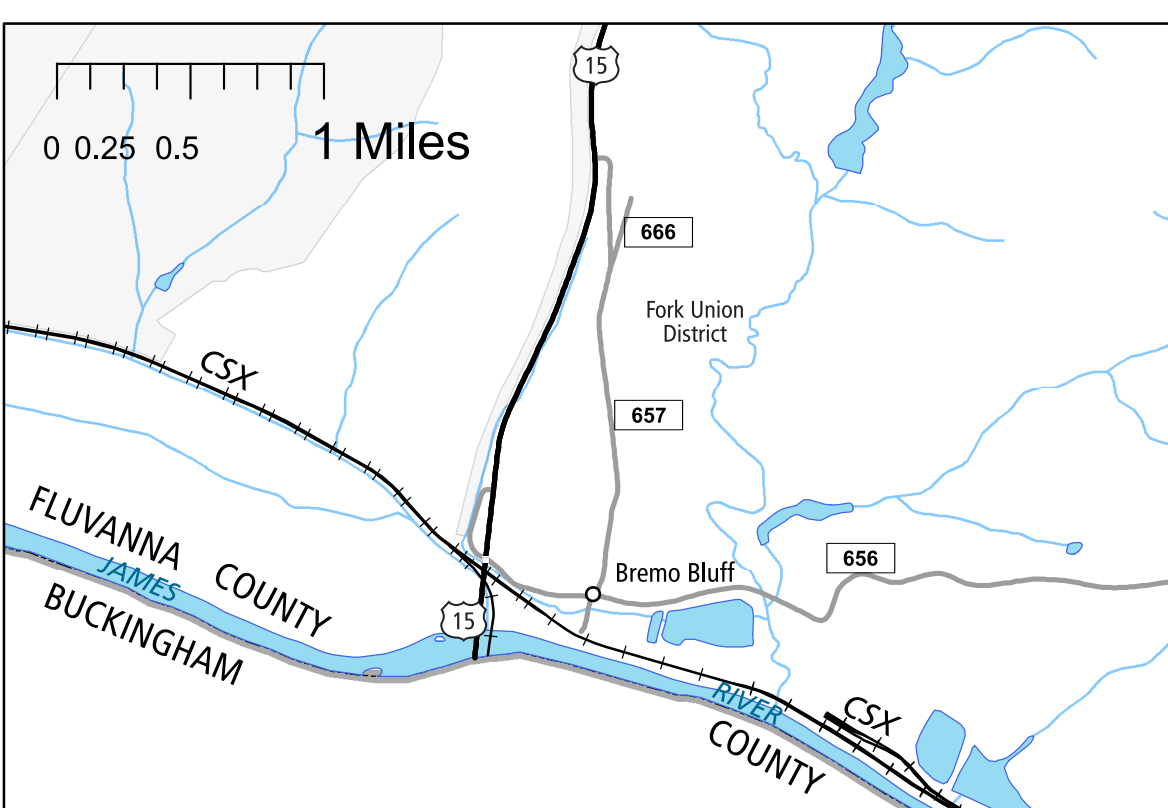


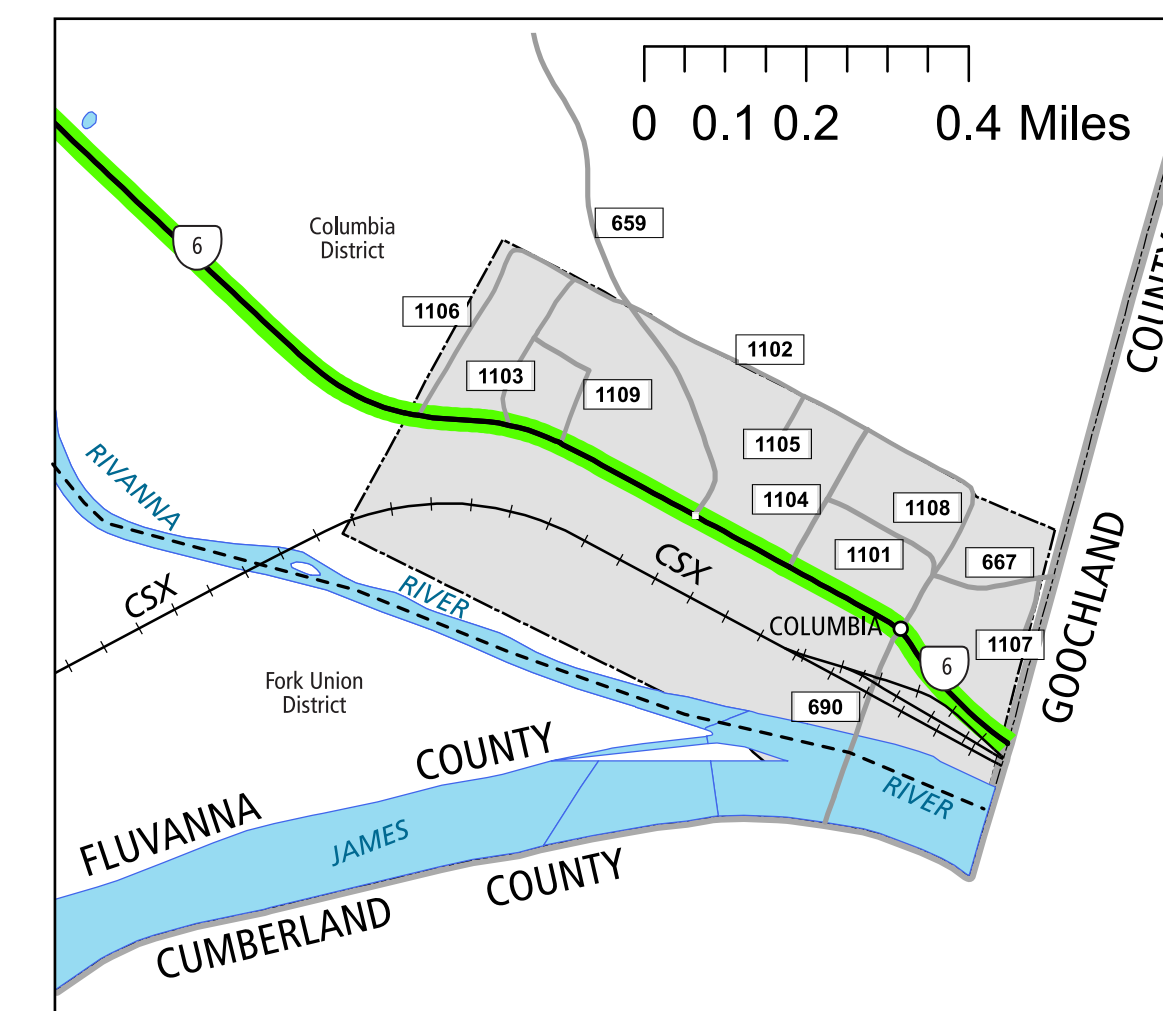
1 SCOTTSVILLE AREA



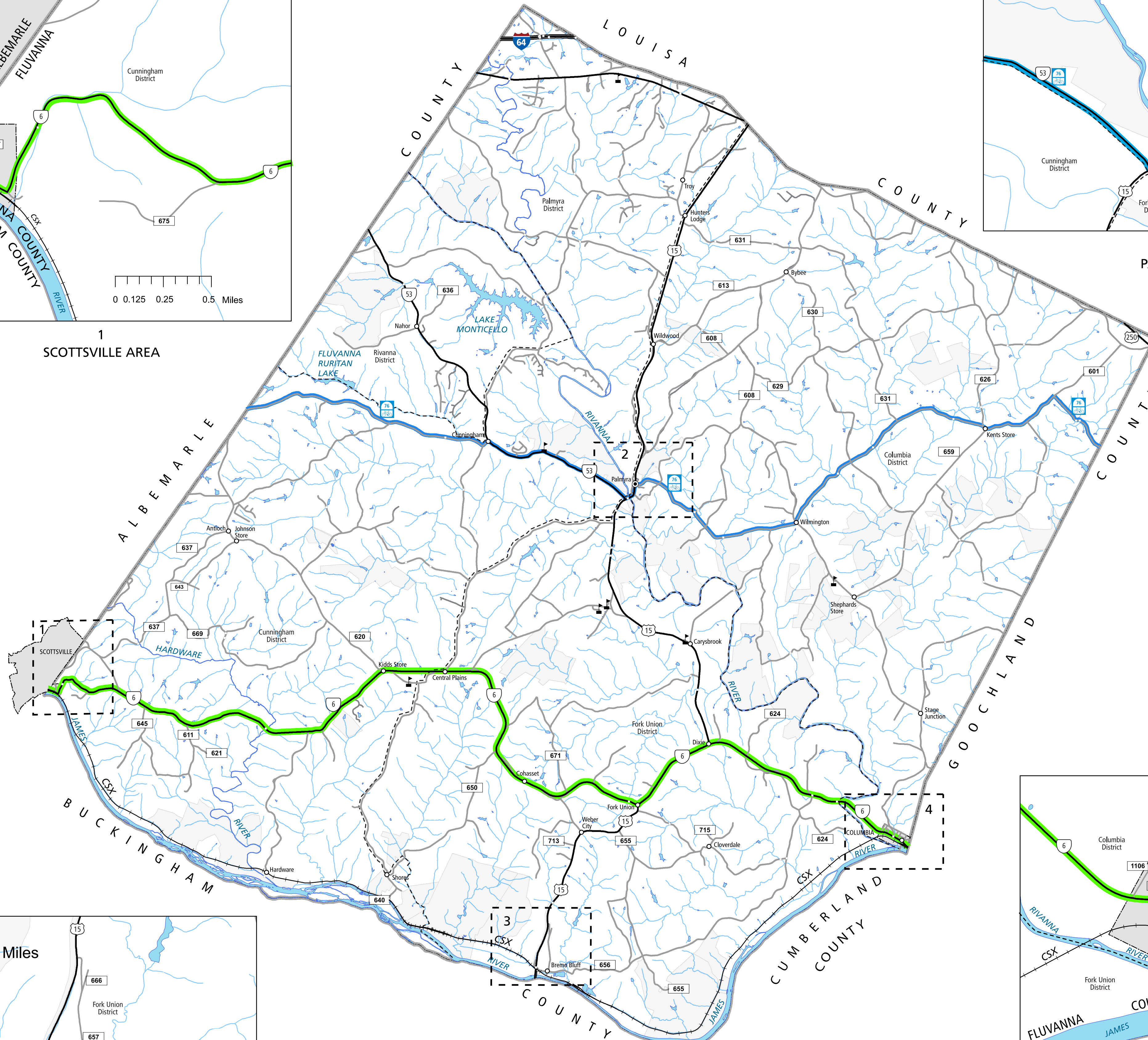
2 PALMYRA AREA



3 BREMO BLUFF AREA



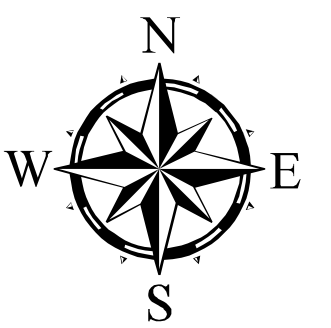
4 COLUMBIA AREA



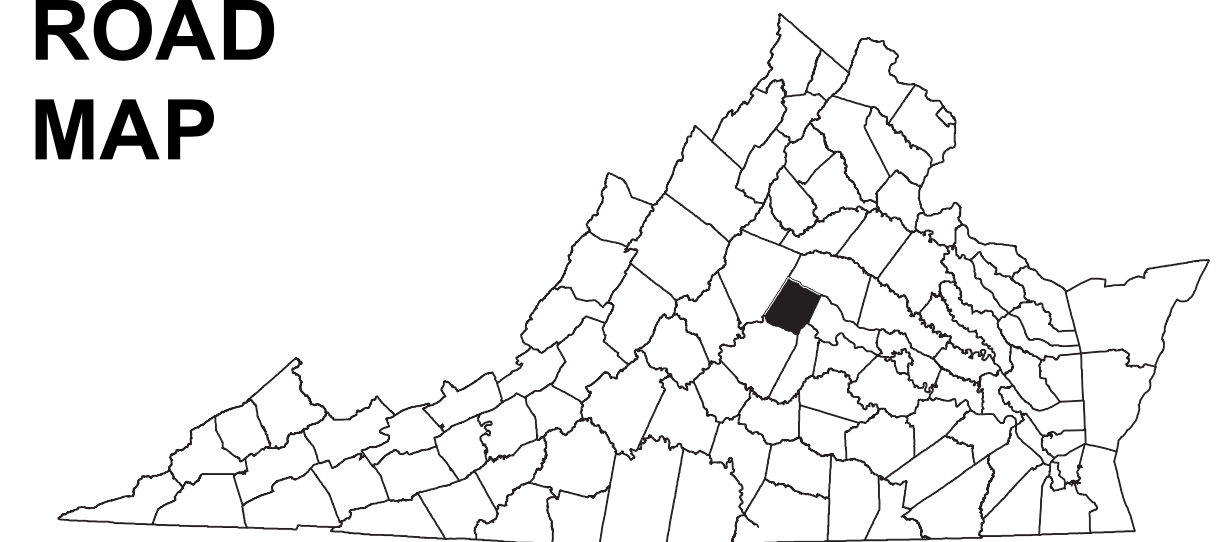
TOTAL PRIMARY MILEAGE IN COUNTY 12/31/21: 51.37
SECONDARY MILEAGE TABULATION

TYPE	7/1/1992	7/1/1994	7/1/1941	TYPE	12/31/1990	12/31/1991	12/31/1992	12/31/1993	12/31/1994	12/31/2000	12/31/2015	12/31/2021
BIT SUR. PAVED	0.81	9.91	30.10	HARD SURFACE	42.07	94.99	151.70	199.89	231.48	236.57	277.73	295.67
GRAVEL SOIL ETC.	51.52	123.51	177.50	ALL WEATHER SURFACE	18.70	49.78	79.38	87.27	95.94	51.98	15.73	15.73
GRADED & DRAINED	78.10	58.25	28.84	LIGHT SURFACE	170.38	90.34	50.04	0.00	0.00	0.00	0.00	0.00
UNIMPROVED	115.67	58.20	15.97	UNSURFACED	19.09	0.25	0.27	0.15	0.00	0.00	0.00	12.22
TOTAL MILEAGE	245.90	249.87	250.01	TOTAL MILEAGE	290.24	274.36	282.29	287.31	287.62	288.56	293.46	307.88

FLUVANNA COUNTY, VA



COUNTY ROAD MAP



FLUVANNA COUNTY

ROAD CLASSIFICATIONS

- Frontage Road
- Secondary Route
- State Route
- U.S. Route
- Urban Road
- LightSurface
- DividedHwyInterstate
- AllWeatherSurface
- Unsurfaced
- otherSurface
- BikeRoutes
- AppalachianTrail
- Scenic Roads

MISCELLANEOUS

- Schools
- Seaports
- Park_RideLots

AIRPORTS

- Commercial
- General
- Military

RAILROADS

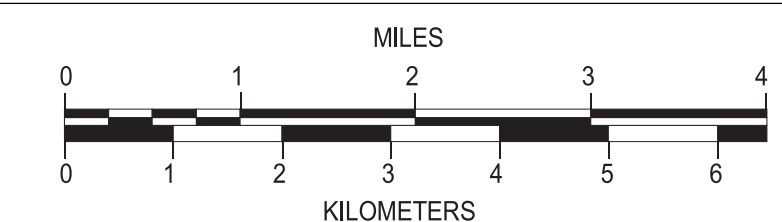
- Metro
- VARailroads
- Park_N_Ride

BOUNDARIES

- MilitaryAreas
- MagisterialDistricts
- Incorp_Areas
- Natural_LandCover

Additional ROAD CLASSIFICATION (Post 2019)

Hard-surface



The accuracy or completeness of this map is not guaranteed or warranted. Map depicts state-maintained highway network as of May 1, 2021. Copyright © 2021 by Commonwealth of Virginia Department of Transportation, All Rights Reserved

AN INVENTORY OF STATE MAINTAINED ROADS