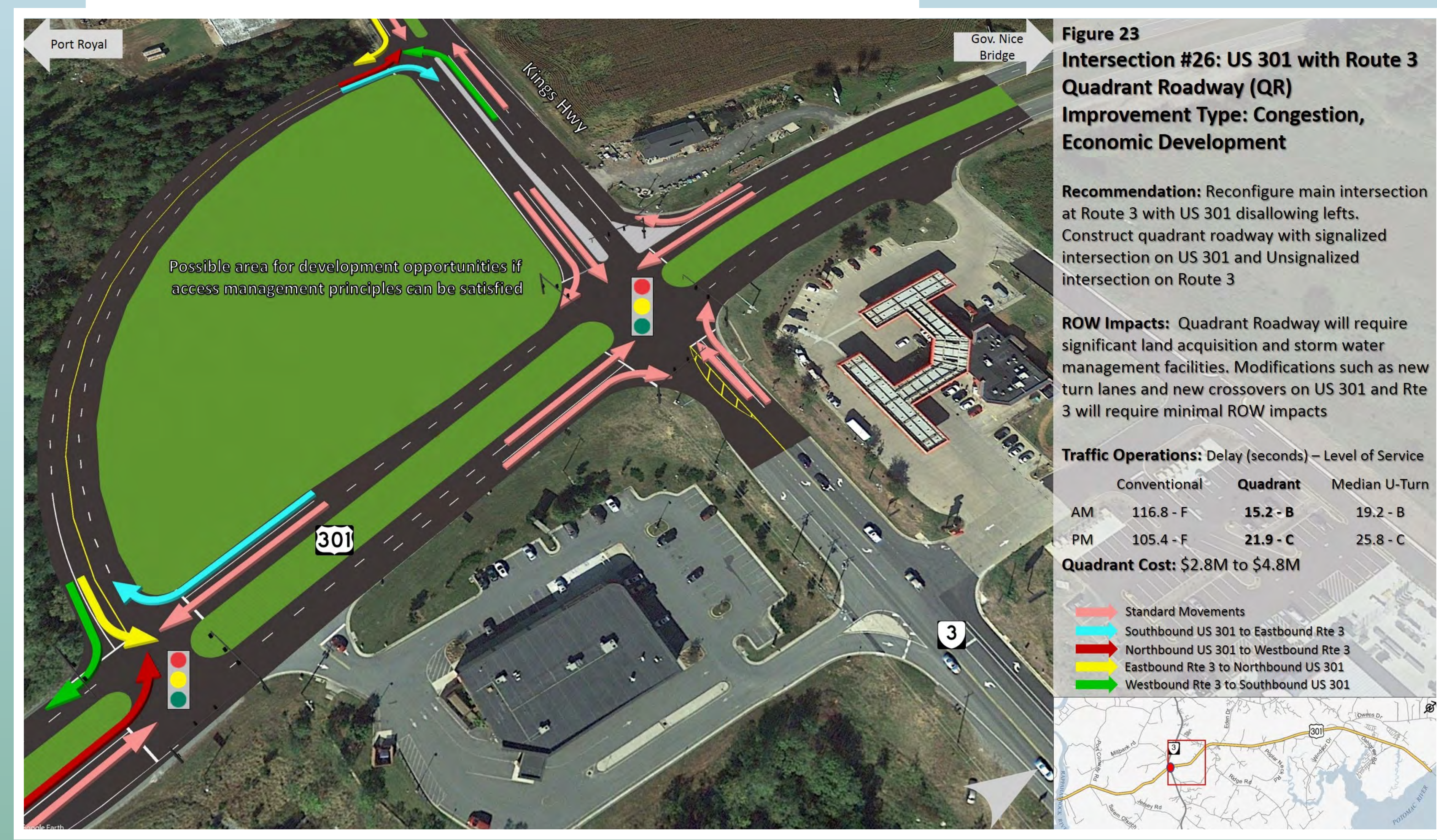


US 301 / ROUTE 207 ARTERIAL PRESERVATION PLAN

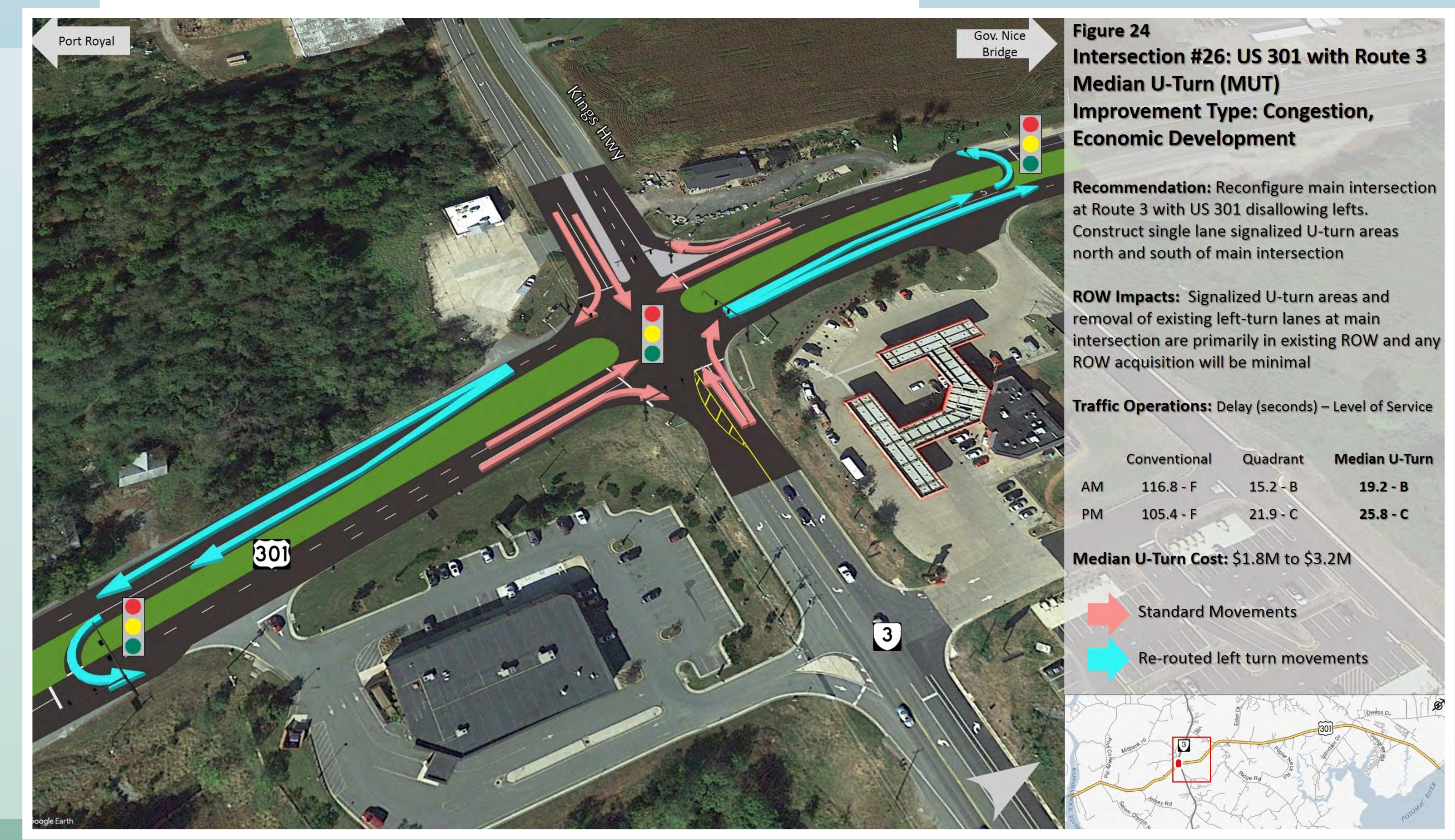
Final Corridor Recommendations

King George County

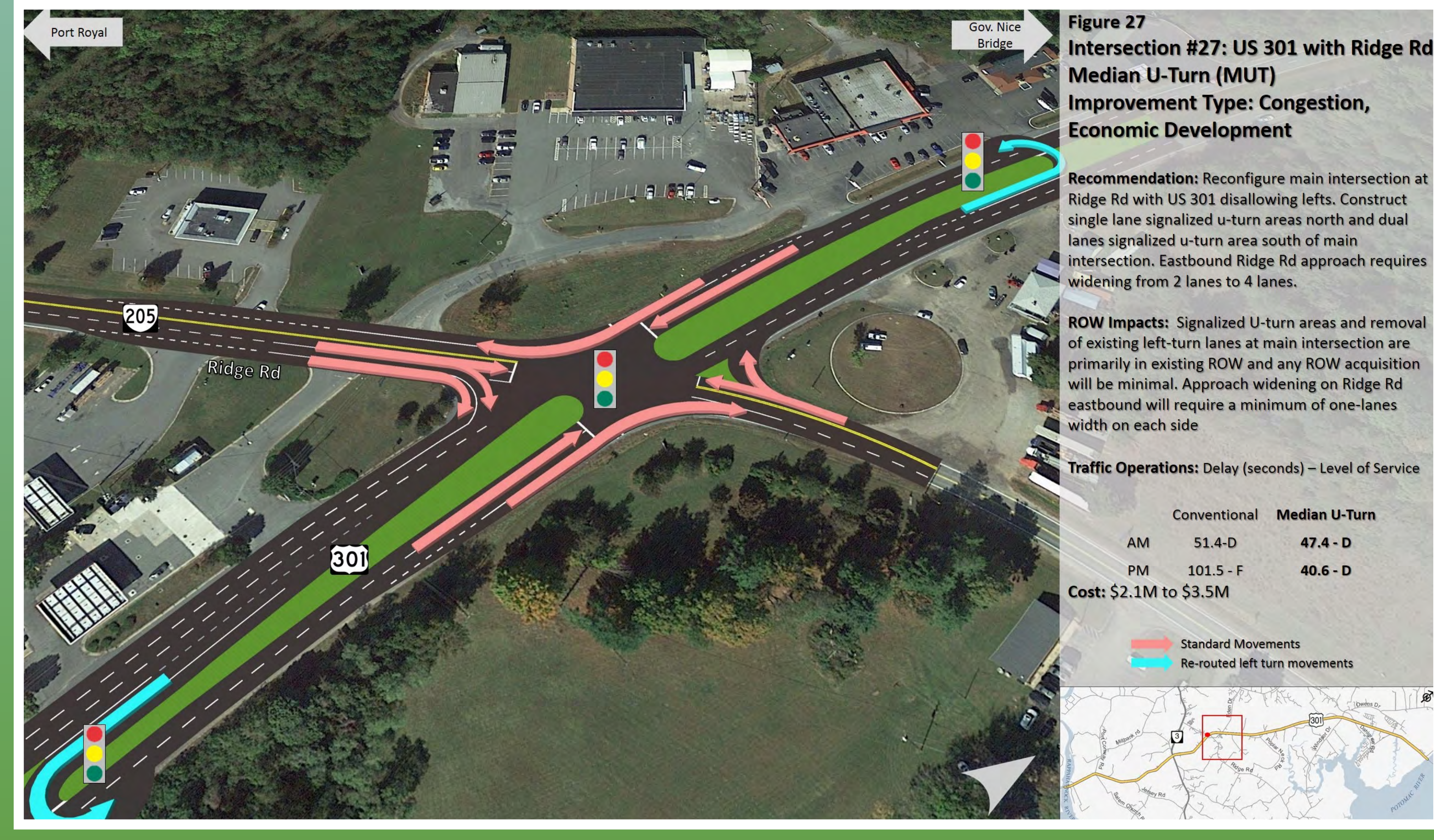
US 301 and Route 3, Option 1 - Quadrant Road



US 301 and Route 3, Option 2 - Median U-Turn



US 301 and Ridge Road - Median U-Turn



US 301 and Windsor Drive - Restricted Crossing U-Turn

