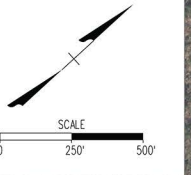
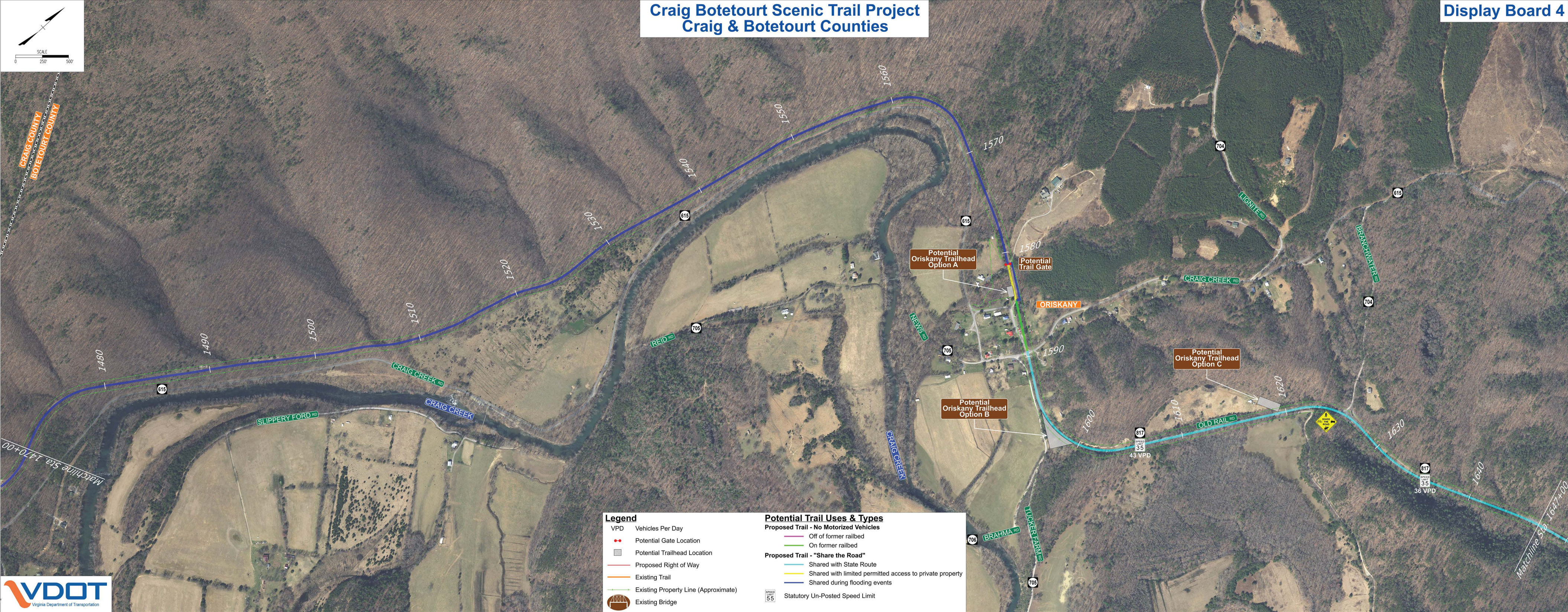


# Craig Botetourt Scenic Trail Project Craig & Botetourt Counties



CRAIG COUNTY  
BOTETOURT COUNTY



### Legend

- VPD Vehicles Per Day
- Potential Gate Location
- Potential Trailhead Location
- Proposed Right of Way
- Existing Trail
- Existing Property Line (Approximate)
- Existing Bridge

### Potential Trail Uses & Types

- Proposed Trail - No Motorized Vehicles**
  - Off of former railbed
  - On former railbed
- Proposed Trail - "Share the Road"**
  - Shared with State Route
  - Shared with limited permitted access to private property
  - Shared during flooding events
- Statutory Un-Posted Speed Limit

Machine Sta. 1647+00

Machine Sta. 1470+00

817  
SPEED  
35  
43 VPD

817  
SPEED  
35  
36 VPD

706  
BRAHMA RD

705  
TUCKER FARM RD

706  
BRAHMA RD

705  
TUCKER FARM RD

706  
BRAHMA RD

705  
TUCKER FARM RD

706  
BRAHMA RD

705  
TUCKER FARM RD

706  
BRAHMA RD

705  
TUCKER FARM RD

706  
BRAHMA RD

705  
TUCKER FARM RD

706  
BRAHMA RD

705  
TUCKER FARM RD

706  
BRAHMA RD

705  
TUCKER FARM RD

706  
BRAHMA RD

705  
TUCKER FARM RD

706  
BRAHMA RD

705  
TUCKER FARM RD

706  
BRAHMA RD

705  
TUCKER FARM RD

706  
BRAHMA RD

705  
TUCKER FARM RD

706  
BRAHMA RD

705  
TUCKER FARM RD

706  
BRAHMA RD

705  
TUCKER FARM RD

706  
BRAHMA RD

705  
TUCKER FARM RD

706  
BRAHMA RD

705  
TUCKER FARM RD

706  
BRAHMA RD

705  
TUCKER FARM RD

706  
BRAHMA RD

705  
TUCKER FARM RD

706  
BRAHMA RD

705  
TUCKER FARM RD

706  
BRAHMA RD

705  
TUCKER FARM RD

706  
BRAHMA RD

705  
TUCKER FARM RD

706  
BRAHMA RD

705  
TUCKER FARM RD

706  
BRAHMA RD

705  
TUCKER FARM RD

706  
BRAHMA RD

705  
TUCKER FARM RD

706  
BRAHMA RD

705  
TUCKER FARM RD

706  
BRAHMA RD

705  
TUCKER FARM RD

706  
BRAHMA RD

705  
TUCKER FARM RD

706  
BRAHMA RD

705  
TUCKER FARM RD

SLIPPERY FORD RD

CRAIG CREEK RD

REID RD

NEWS RD

OLD RAIL RD

CRAIG CREEK RD

LIGNITE RD

BRANCHWATER RD

CRAIG CREEK

CRAIG CREEK

CRAIG CREEK

1480

1490

1500

1510

1520

1530

1540

1550

1560

1570

1580

1590

1600

1610

1620

1630

1640



817  
SPEED  
35  
43 VPD

817  
SPEED  
35  
36 VPD

706  
BRAHMA RD

705  
TUCKER FARM RD

706  
BRAHMA RD

705  
TUCKER FARM RD

706  
BRAHMA RD

705  
TUCKER FARM RD

706  
BRAHMA RD

705  
TUCKER FARM RD

706  
BRAHMA RD

705  
TUCKER FARM RD

706  
BRAHMA RD

705  
TUCKER FARM RD

706  
BRAHMA RD

705  
TUCKER FARM RD

706  
BRAHMA RD

705  
TUCKER FARM RD

706  
BRAHMA RD

705  
TUCKER FARM RD

706  
BRAHMA RD

705  
TUCKER FARM RD

706  
BRAHMA RD

705  
TUCKER FARM RD

706  
BRAHMA RD

705  
TUCKER FARM RD

706  
BRAHMA RD

705  
TUCKER FARM RD

706  
BRAHMA RD

705  
TUCKER FARM RD

706  
BRAHMA RD

705  
TUCKER FARM RD

706  
BRAHMA RD

705  
TUCKER FARM RD

706  
BRAHMA RD

705  
TUCKER FARM RD

706  
BRAHMA RD

705  
TUCKER FARM RD

706  
BRAHMA RD

705  
TUCKER FARM RD

706  
BRAHMA RD

705  
TUCKER FARM RD

706  
BRAHMA RD

705  
TUCKER FARM RD

706  
BRAHMA RD

705  
TUCKER FARM RD

706  
BRAHMA RD

705  
TUCKER FARM RD

706  
BRAHMA RD

705  
TUCKER FARM RD

706  
BRAHMA RD

705  
TUCKER FARM RD

706  
BRAHMA RD

705  
TUCKER FARM RD

706  
BRAHMA RD

705  
TUCKER FARM RD

706  
BRAHMA RD

705  
TUCKER FARM RD